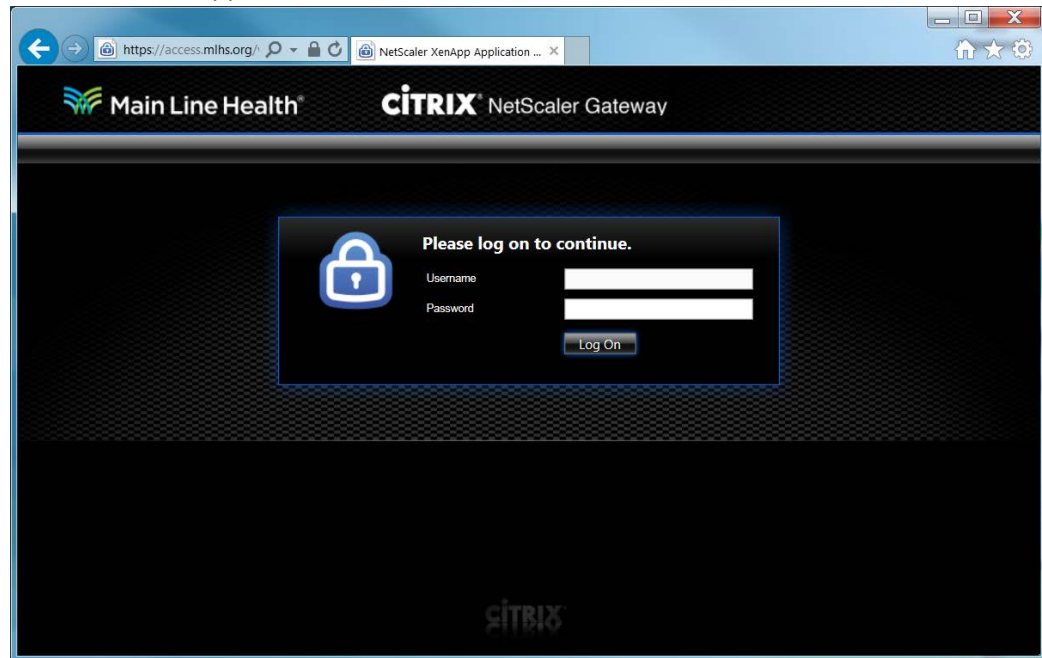


Remote Access to MLH Epic Playground (PLY) Environment Instructions

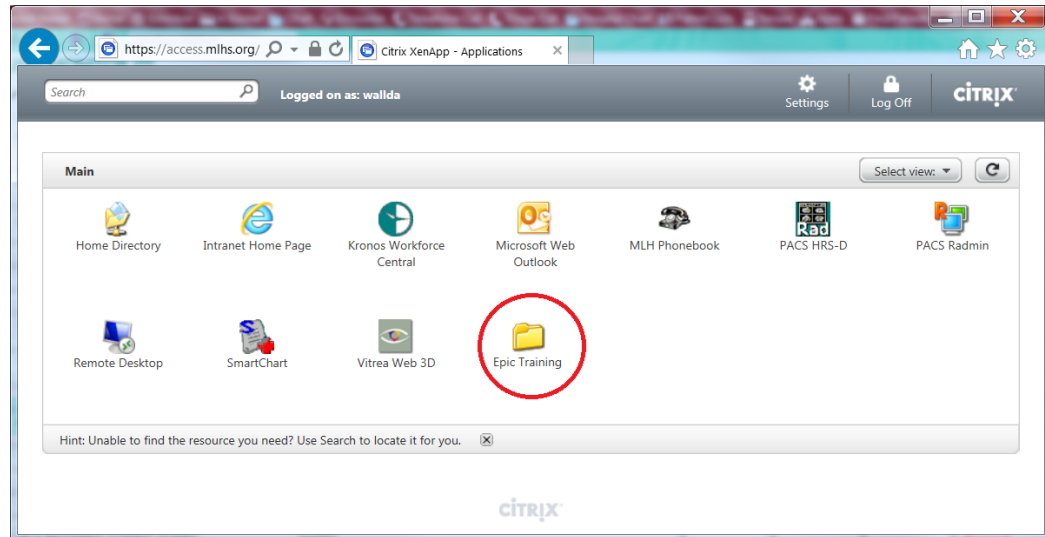
Instructions

1. Open a browser and type in : <https://access.mlhs.org>
 - a. This screen will appear

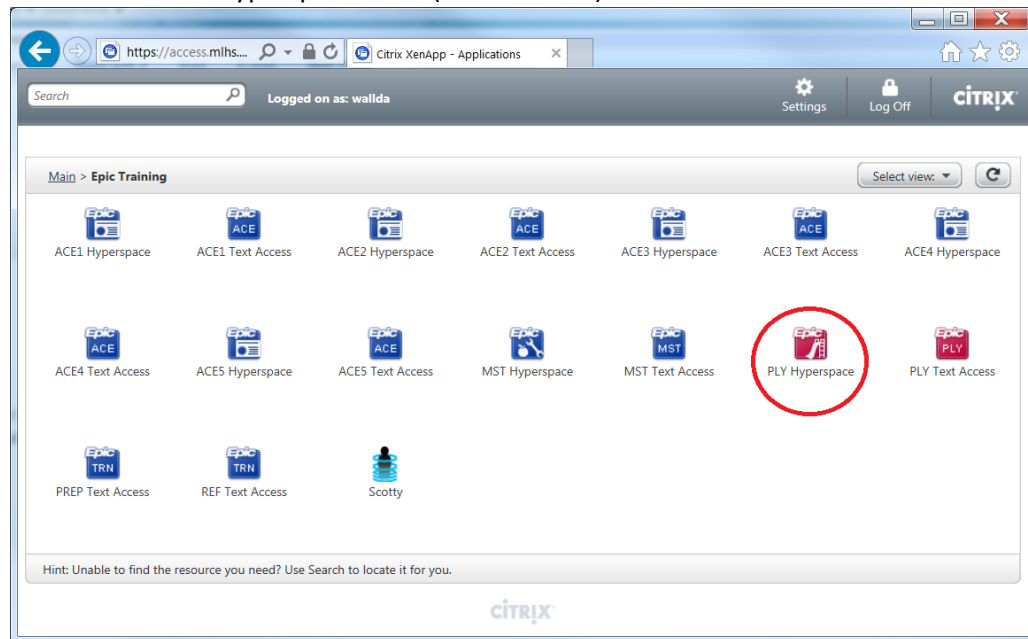


2. Enter your MLH username and password where indicated and Log on.
3. Multi-Factor Authentication will contact your phone and you will need to approve the connection. If you have not set up Multi-Factor Authentication, instructions can be found here: <https://www.mainlinehealth.org/employees/multi-factor-authentication-registration>

4. The below screen will appear. The number of icons will vary depending on security.
 - a. Click on the Epic Training folder (circled in red). If you do not see the “Epic Training” folder, please call the Help Desk at 484.596.4357 and request that they add your user id to the “Epic-Playground Active Directory Group”.



5. The below screen will appear. The number of icons will vary depending on security.
 - a. Click on the “PLY Hyperspace” icon (circled in red)



6. The session will launch and the Hyperspace login screen will appear.
 - a. If the below screen does not appear, please download and install Citrix Receiver. Instructions to do this can be found on this page under remote access: <https://www.mainlinehealth.org/physicians/frequently-used-links-for-physicians> Otherwise, enter your training credentials.

